

# CONTENTS

Range of Remote Control Signal Reception:.....	2
Description of The Projector’s Interface .....	3
Keystone correction horizontal ( $\pm 15^\circ$ ) .....	4
How to use TRONFY TP60+ .....	4
FAQ.....	5
How to connect the projector with iPhone5/5s/6/6plus and iPad device: .....	5
What cable do I need to connect a laptop without HDMI port? .....	5
How to connect a laptop with projector with HDMI or VGA cable?.....	6
What do I need to run this with video from my Android phone /Tablet?.....	6
Can I use the projector with HDMI cable directly From a TV or PC?.....	6
Can I connect the DVD player with AV Slot? .....	7
About the Projection Distance and Projection Size .....	7
How to change the Aspect Ratio:.....	8
How to set up the projector's color: .....	9
The projector would have to rotate/Horizontal flip OFF as a whole 180 degrees .....	9
Trouble Shooting .....	10
How to reduce the noise of projector: .....	10
Over Temperature Protection: .....	11
Dolby .....	11
Could the projector support the power point presentations?.....	11
How can I get a better movie experience? .....	11
No image and sound / Shuts off automatically .....	11
Have sound no image .....	12
Have image no sound .....	12
Daily maintenance of the projector .....	12

## Range of Remote Control Signal Reception:



The maximum effective remote control distance of the infrared remote control is 10M. In order to ensure the sensitivity of infrared sensors, we recommend that the longest remote control distance in about 7M.

The Remote Control Uses 2 x AAA 1.5v batteries (Not included)

Don't use the new and old battery at the same time. Take out the batteries if no use for long time. When operating the remote control, please make sure that the signal emission of the remote control aims at the infrared receiving interface of projector.

## Description of The Projector's Interface



SD Card Interface



USB 2.0 Slot:

Projector is only a device for projecting images. The USB port is only for U-Disk/Hard Disk Device connecting, Not support reads the data from iPhone/iPad/Android Smartphones.



Out 5V Interface:

5V-Output USB for Mobile Tablet power supply. This means the usb output is only for power supply. (NOT FOR iphone, iPad charging.)



HDMI Input Interface:

HD decoding: Support 1080P HD decoding, whether HD video, pictures, music, movie, e-books can be played.



VGA Interface:

If you connect the projector with VGA Interface, there is a picture but no sound. Unless using a VGA cable with audio.



The Signal Source of Remote Control:

Remote Control must be aligned to The Signal Source, which can control the projector.



Headphone jack:

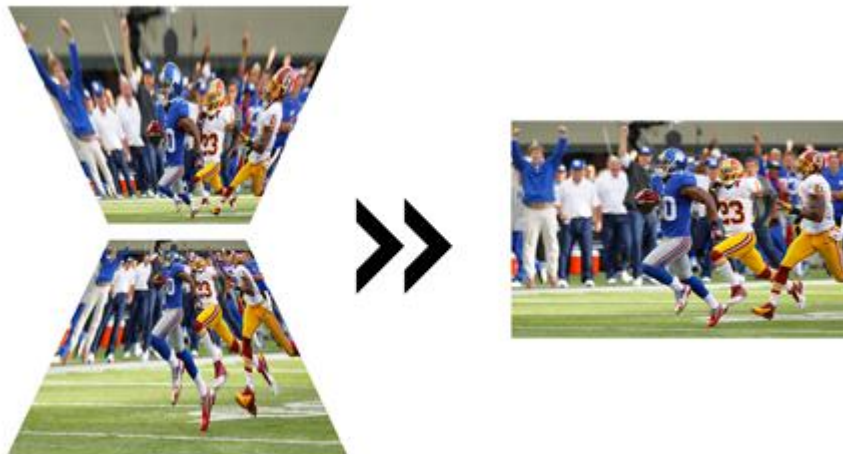
Quiet enjoyment, you can connect a headphone via the 3.5mm headphone jack to avoid affecting other people.



AV Interface:

For perfect sound, it is recommended to connect with an external speaker via the 3-In-1 audio& video port, please choose good quality audio equipment.

## Keystone correction horizontal ( $\pm 15^\circ$ )



## How to use TRONFY TP60+

Image focus: place the projector vertical to the projection screen, and then turn the focusing ring slightly, until the brilliant image presented.



## FAQ

### How to connect the projector with iPhone5/5s/6/6plus and iPad device:

The projector can be connected with iPhone/iPad by HDMI input slot. You need to have a Lightning Digital AV Adapter LOCALLY. **(Picture for reference only)**

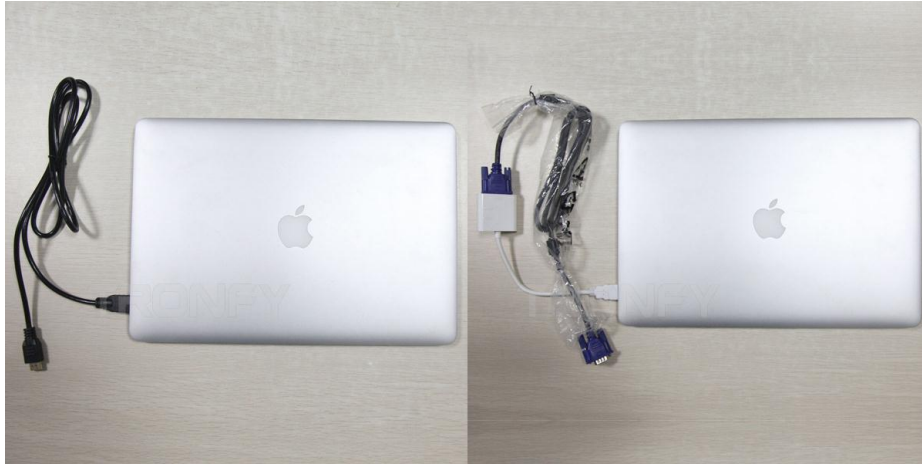
1. Connect the HDMI TO HDMI Cable with Projector
2. Connect the HDMI to HDMI Cable with a Lightning Digital AV Adapter
3. Connect a Lightning Digital AV Adapter with your iPhone /ipad



### What cable do I need to connect a laptop without HDMI port?

VGA!

## How to connect a laptop with projector with HDMI or VGA cable?



If you connect the projector with VGA Interface, there is a picture but no sound. Unless using a VGA cable with audio.

## What do I need to run this with video from my Android phone /Tablet?

You will need an HDMI cable with a micro connector to your phone and regular size HDMI end to attach it to the projector. Make sure your Android phone is MHL ready, otherwise it won't work. You need to order the HDMI to HDMI Cable and MHL Cable LOCALLY.



## Can I use the projector with HDMI cable directly From a TV or PC?

All the projectors support HDMI-in input data. As long as ensure the output data of HDMI-out PC and TV function. But in general, most of the PC and TV only have HDMI-in, no HDMI output data

output function. Please check if your television and PC have HDMI output function.

Notice for Connecting the PC with Projector:

The traditional desktop computer only have VGA interface, no HDMI. With VGA interface, you can link computer and desktop through the VGA line, while there is only images no sound.

## Can I connect the DVD player with AV Slot?

The projector has 3-in-1 AV-IN slot, supports AV-in input data, please make sure that the DVD has AV-OUT data output function, because most of DVD players only support AV-IN, not AV-OUT.

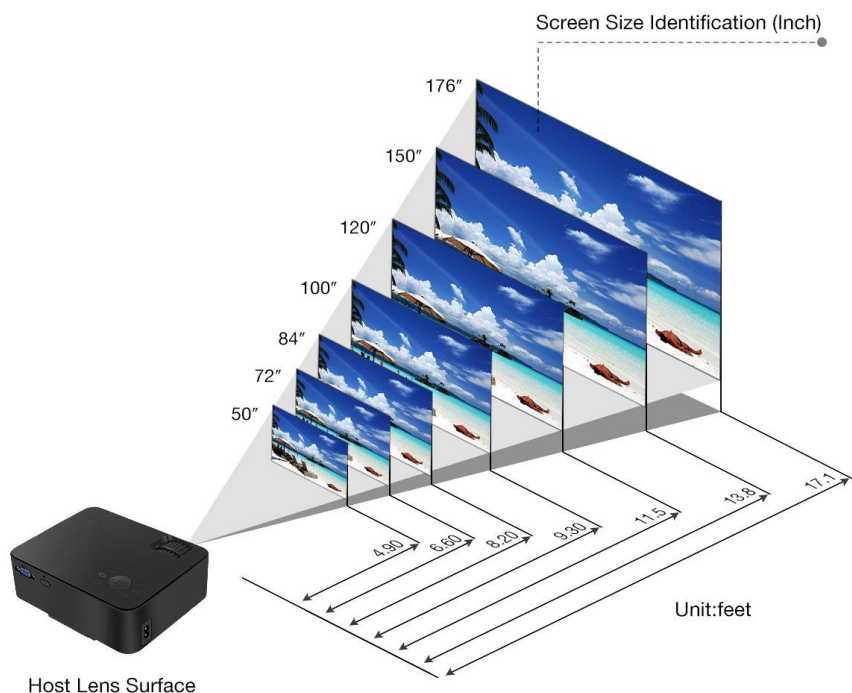
**PS: It is not recommended to connect devices through the AV port, which may cause image distortion, lack of color, lost voice, etc... It will affect the projector's performance.**

When connection is completed, you should choose the Input Source: AV

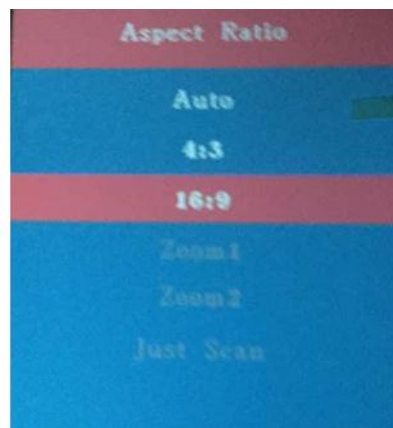


## About the Projection Distance and Projection Size

Projection Distance: 4.9ft-17.1ft; Projection Size: 50"-176". For Best Projection Distance: 6.6ft-8.2ft; Best Projection Size: 130". Adjust the size of the image by changing the distance.



## How to change the Aspect Ratio:



## What's about the 5V-OUT USB and the other USB:

Projector is only a device for projecting images, it only reads the data from USB drive directly via the USB input slot. USB Output 5V for Mobile Tablet power supply. This means the USB output is only for power supply. **Not Supports iphone4/4S/5/5S/6/6 Plus/iPad power supply.**



## How to set up the projector's color:

Please try the following Step:

Turn on Projector, Click MENU –Color Temperature--- Click OK. There are four ways for you to choose, you can click the left or right (Use remote) to choose.

At the end of the User Mode, You can adjust the color according as you like. You can add or decrease the Number of the Red/Green/Blue to adjust the color.

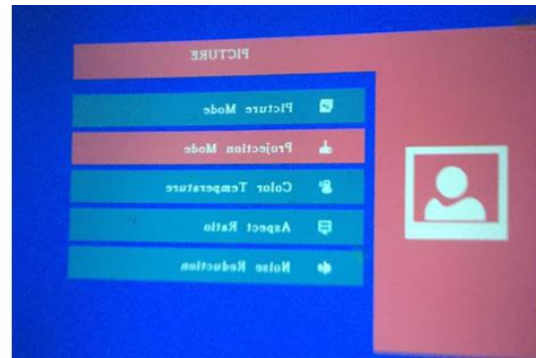


## The projector would have to rotate/Horizontal flip OFF as a whole 180 degrees

Please try the following Step:

Turn on Projector, Click MENU--- Click Projection Mode---Click OK

There are five ways for you to choose; you can click OK one more to choose.



## How to Mount a Projector

Part 1 of 3: Think about the Screen Placement

1. Find the best location for the screen.
2. Consider your screen height.
3. Know your screen size.

Part 2 of 3: Think about the Projector Placement

1. Calculate your projector's throw distance.
2. Determine the best throw distance for your projector.
3. Find out your projector's vertical offset.
4. Calculate the vertical placement of your projector.
5. Determine horizontal lens shift.

Part 3 of 3: Mounting the Projector

1. Decide on the best mount to suit your projector and room.
2. Attach the mount.
3. Calculate the mount-to-lens distance and adjust throw distance accordingly.
4. Secure the projector.
5. Secure the cables.
6. Adjust the projector settings to fine tune the image.

When you complete all the steps, you can enjoy your Home theater life.

Notice:

When you use it, you should adjust the image 180 degrees flip first.

## Trouble Shooting

### How to reduce the noise of projector:

Usually, when the projectors works, the fan will make noise when cooling off the high temperature. Please take a break after 3-4 hours of using to avoid overheating.

Besides, here are the tips to reduce the noise

1. Please use the projector in room temperature or low temperature, so the projector will heat slowly, and then the noise will be reduced.
2. Please use projector in the clean environment and seal it after using to get away from the dust.
3. If you use the projector about 3-6 months, the noise of projector will be louder, you can try to take apart it to clean the dust on the fan.

## **Over Temperature Protection:**

If the temperature inside the projector rises too high, the over temperature projector will automatically turn off the lamp with the STATUS indicator blinking.

Should this happen, do the following:

- \* Unplug the power cable after the cooling fans stop.
- \* Clean the ventilation holes if they are clogged with dust.
- \* Wait about 60 minutes until the inside of the projector becomes cool enough.

## **Dolby**

NOTICE: Due to the copyright issue of Dolby, this projector does not support Dolby's Audio decoding 【Close the Dolby option of the device you connected】

## **Could the projector support the power point presentations?**

It supports PPT format, but please be aware that this projector is a simple projection equipment. It can support all files you have in your Computer/Laptop device. But it doesn't have any intelligent functions, such as read the office software in the U disk directly. (If you need this function, please search for SMART android projector)

## **How can I get a better movie experience?**

It is important to note that projectors in this price range, you need to have the room/ area you are viewing this projector as dark as possible. Overhead lights and especially sunlight will easily drown the light produced by this LED and will make the image quality suffer or make it impossible to actually see the image. This projector is not meant for daytime viewing or viewing with the lights on. In one word, the image quality would be actually fantastic while in darkness! Not recommended for PPT or business presentation, ideal for home theater movies and video game use.

## **No image and sound / Shuts off automatically**

Take off the power supply for a second and restart the projector, Ensure the signal input

connection is ok and choose the correct signal source.

Sometimes if multiple devices are connected, there might be some signal interference. You can turn off that equipment, leaving one of the devices you want to play.

## **Have sound no image**

Ensure all cables are connected to the right slots, adjusted the value of the projector.  
(Connect the device throw by HDMI / USB slot)

## **Have image no sound**

Connect the device throw by VGA, this situation is normal. VGA only supports picture but no sound, Check if the sound was disabled.

## **Daily maintenance of the projector**

- Right to switch on and off and not too frequent switching projectors
- It is strictly forbidden to use under unstable or low voltage conditions
- Regularly clean the projector lens, dustproof net, air inlet and LCD screen
- Avoid strong impact, squeeze and vibration
- Do not use the projector for a long time. It is recommended the longest operating time to use 3-4 hours at once
- In order to better maintain and use the TRONFY projector, we recommend taking it out to use periodically every period of time

**This manual is for references only, if you have any question, please contact us through Amazon.**